

DESIGNED TO COMPLY WITH ASME A17.1 PART 5.3 WHEN PROPERLY INSTALLED

CONTROLLER CONFORMS TO ASME A17.5 INTERTEK 4010781



- Features:**
- Battery Powered: 24 VDC Control System
 - Rated Load: 400 lbs
 - Speed: 8-10 fpm
 - Max. Travel: 14'-0"
 - Car Size: 33W x 26D x 75H
 - Overhead Clearance: 7'-6" Min.
 - Powder Coated Metal: Gray White
 - Vision Panels: Clear Acrylic
 - Car Light: Recessed LED
 - Telephone: Inside Telephone Cabinet
 - Constant pressure up/down controls
 - Key Lock on controls
 - Emergency Stop Switch and Alarm
 - Status LED
 - Winding Drum Drive with two 1/4" aircraft cables
 - Electromechanical Interlock on Gate
 - Grab Rail
 - Slack Cable Safety Device
 - Final Limit Switches
 - Safety Obstruction Sensors above and below Car

PROPRIETARY AND CONFIDENTIAL
 THE INFORMATION CONTAINED IN THIS DRAWING IS THE SOLE PROPERTY OF STAYING HOME CORPORATION. ANY REPRODUCTION IN PART OR AS A WHOLE WITHOUT THE WRITTEN PERMISSION OF STAYING HOME CORPORATION IS PROHIBITED.

UNLESS OTHERWISE SPECIFIED:		NAME	DATE
DIMENSIONS ARE IN INCHES			8/8/2016
TOLERANCES:			
FRACTIONAL: ±1/16		DRAWN	
ANGULAR: ±0.5°		CHECKED	
ONE PLACE DECIMAL ±0.1		ENG APPR.	
TWO PLACE DECIMAL ±0.01		MFG APPR.	
THREE PLACE DECIMAL ±0.005		Q.A.	
INTERPRET GEOMETRIC TOLERANCING PER:		COMMENTS:	
MATERIAL			
FINISH			
DO NOT SCALE DRAWING			

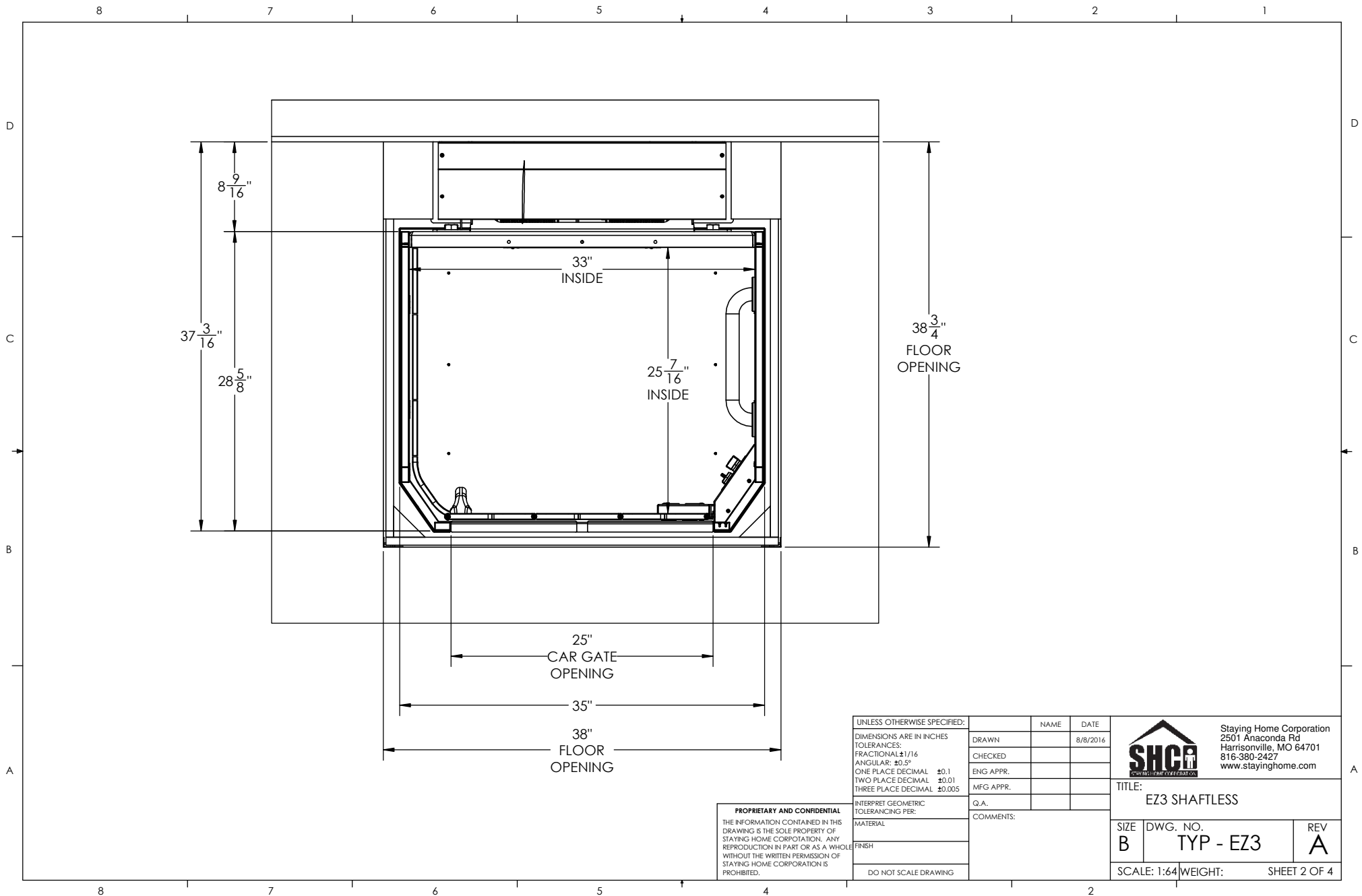
Staying Home Corporation
 2501 Anaconda Rd
 Harrisonville, MO 64701
 816-380-2427
 www.stayinghome.com

SHCA
CONSTRUCTION CORPORATION

TITLE:
EZ3 SHAFTLESS

SIZE B	DWG. NO. TYP - EZ3	REV A
------------------	------------------------------	-----------------

SCALE: 1:64 WEIGHT: SHEET 1 OF 4

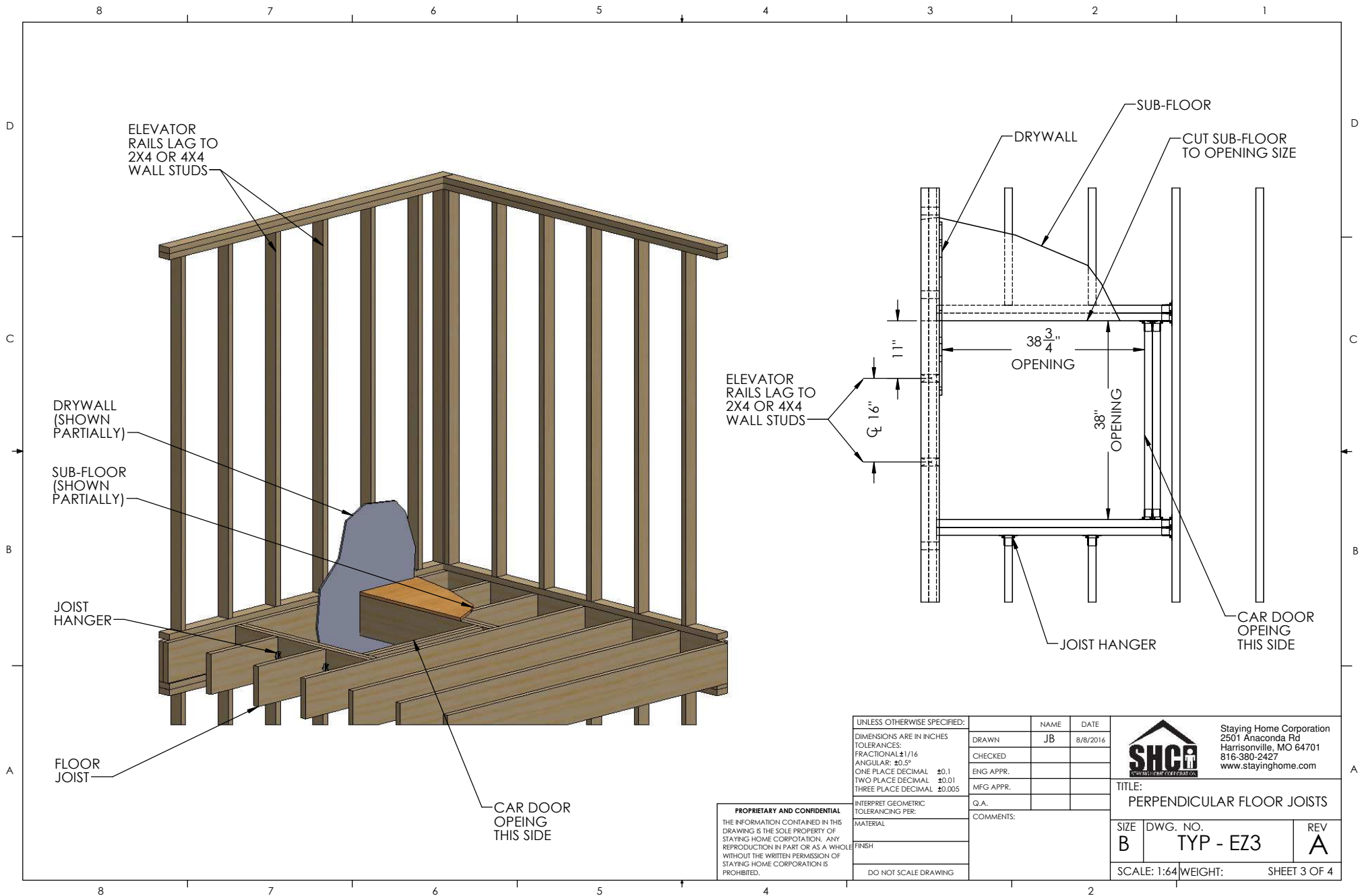


PROPRIETARY AND CONFIDENTIAL
 THE INFORMATION CONTAINED IN THIS DRAWING IS THE SOLE PROPERTY OF STAYING HOME CORPORATION. ANY REPRODUCTION IN PART OR AS A WHOLE WITHOUT THE WRITTEN PERMISSION OF STAYING HOME CORPORATION IS PROHIBITED.

UNLESS OTHERWISE SPECIFIED:	
DIMENSIONS ARE IN INCHES	
TOLERANCES:	
FRACTIONAL: ±1/16	
ANGULAR: ±0.5°	
ONE PLACE DECIMAL ±0.1	
TWO PLACE DECIMAL ±0.01	
THREE PLACE DECIMAL ±0.005	
INTERPRET GEOMETRIC TOLERANCING PER:	
MATERIAL:	
FINISH:	
DO NOT SCALE DRAWING	

NAME	DATE
DRAWN	8/8/2016
CHECKED	
ENG APPR.	
MFG APPR.	
Q.A.	
COMMENTS:	

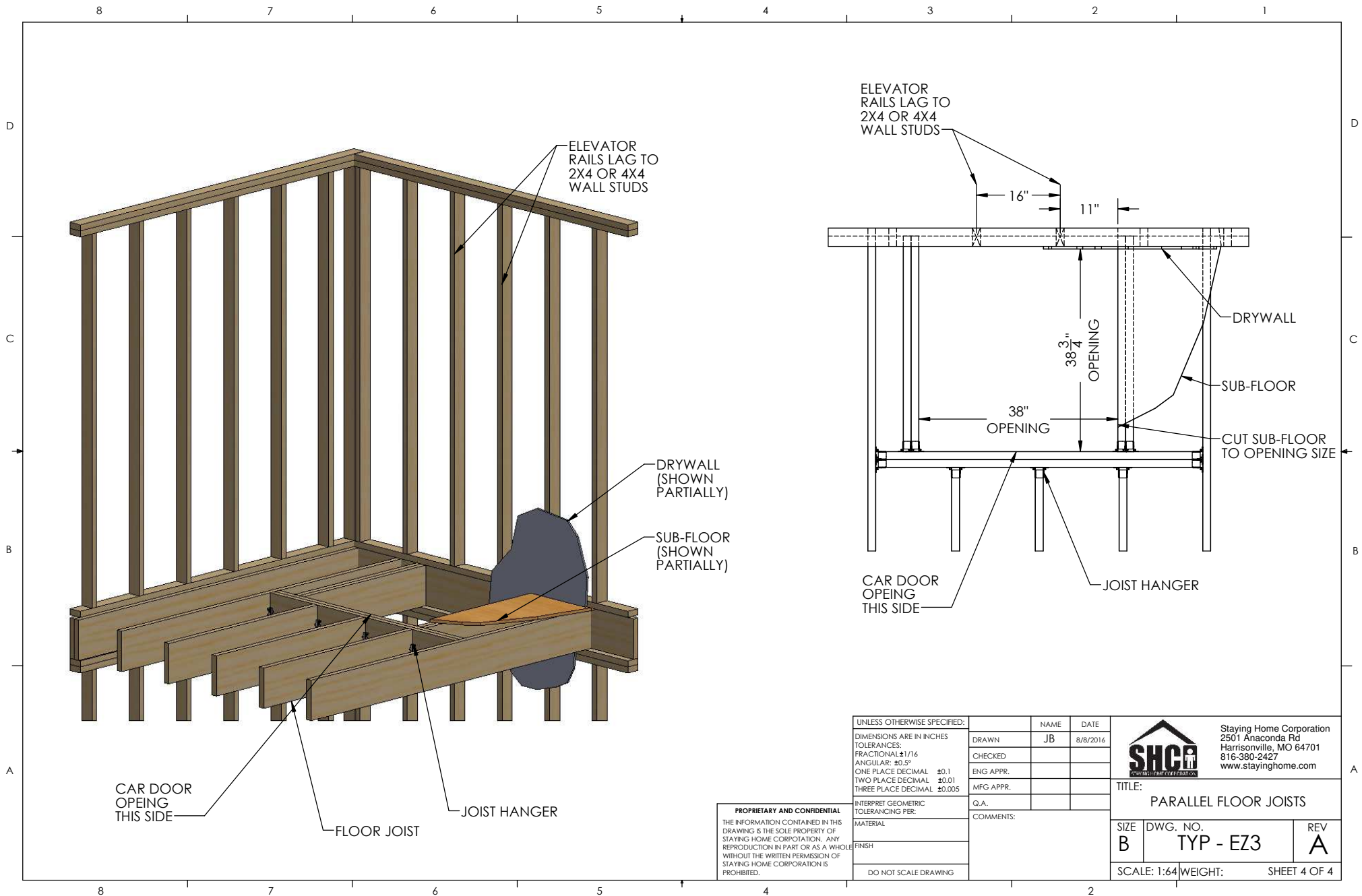
 Staying Home Corporation 2501 Anaconda Rd Harrisonville, MO 64701 816-380-2427 www.stayinghome.com		TITLE:	
		EZ3 SHAFTLESS	
SIZE	DWG. NO.	REV	
B	TYP - EZ3	A	
SCALE: 1:64		WEIGHT:	SHEET 2 OF 4



PROPRIETARY AND CONFIDENTIAL
 THE INFORMATION CONTAINED IN THIS DRAWING IS THE SOLE PROPERTY OF STAYING HOME CORPORATION. ANY REPRODUCTION IN PART OR AS A WHOLE WITHOUT THE WRITTEN PERMISSION OF STAYING HOME CORPORATION IS PROHIBITED.

UNLESS OTHERWISE SPECIFIED:	NAME	DATE
DIMENSIONS ARE IN INCHES	JB	8/8/2016
TOLERANCES:		
FRACTIONAL: ±1/16		
ANGULAR: ±0.5°		
ONE PLACE DECIMAL ±0.1		
TWO PLACE DECIMAL ±0.01		
THREE PLACE DECIMAL ±0.005		
INTERPRET GEOMETRIC TOLERANCING PER:		
MATERIAL		
FINISH		
DO NOT SCALE DRAWING		

 Staying Home Corporation 2501 Anaconda Rd Harrisonville, MO 64701 816-380-2427 www.stayinghome.com	TITLE:	
	PERPENDICULAR FLOOR JOISTS	
SIZE	DWG. NO.	REV
B	TYP - EZ3	A
SCALE: 1:64	WEIGHT:	SHEET 3 OF 4



CAR DOOR
OPENING
THIS SIDE

FLOOR JOIST

JOIST HANGER

DRYWALL
(SHOWN
PARTIALLY)

SUB-FLOOR
(SHOWN
PARTIALLY)

ELEVATOR
RAILS LAG TO
2X4 OR 4X4
WALL STUDS

CAR DOOR
OPENING
THIS SIDE

JOIST HANGER

DRYWALL

SUB-FLOOR

CUT SUB-FLOOR
TO OPENING SIZE

UNLESS OTHERWISE SPECIFIED:

DIMENSIONS ARE IN INCHES
TOLERANCES:
FRACTIONAL: ±1/16
ANGULAR: ±0.5°
ONE PLACE DECIMAL ±0.1
TWO PLACE DECIMAL ±0.01
THREE PLACE DECIMAL ±0.005

INTERPRET GEOMETRIC
TOLERANCING PER:

MATERIAL

FINISH

DO NOT SCALE DRAWING

NAME

DATE

DRAWN

8/8/2016

CHECKED

ENG APPR.

MFG APPR.

Q.A.

COMMENTS:



Staying Home Corporation
2501 Anaconda Rd
Harrisonville, MO 64701
816-380-2427
www.stayinghome.com

TITLE:
PARALLEL FLOOR JOISTS

SIZE
B

DWG. NO.
TYP - EZ3

REV
A

SCALE: 1:64

WEIGHT:

SHEET 4 OF 4

PROPRIETARY AND CONFIDENTIAL
THE INFORMATION CONTAINED IN THIS
DRAWING IS THE SOLE PROPERTY OF
STAYING HOME CORPORATION. ANY
REPRODUCTION IN PART OR AS A WHOLE
WITHOUT THE WRITTEN PERMISSION OF
STAYING HOME CORPORATION IS
PROHIBITED.