

- Features:**
- Battery Powered: 24 VDC Control System
 - Rated Load: 400 lbs
 - Speed: 15-18 fpm
 - Max. Travel: 21'-0"
 - Car Size: 33W x 39D x 75H
 - Overhead Clearance: 7'-2" Min.
 - Powder Coated Metal: Gray White
 - Vision Panels: Clear Acrylic
 - Car Light: Recessed LED
 - Telephone: Inside Telephone Cabinet
 - Automatic operation
 - Key Lock on controls
 - Emergency Stop Switch and Alarm
 - Status LED
 - Winding Drum Drive with two 1/4" aircraft cables
 - Electromechanical Interlock on Doors
 - Car Gate monitor
 - Grab Rail
 - Slack Cable Safety Device
 - Final Limit Switches

UNLESS OTHERWISE SPECIFIED:	NAME	DATE
DIMENSIONS ARE IN INCHES		8/8/2016
TOLERANCES:		
FRACTIONAL: ±1/16	DRAWN	
ANGULAR: ±0.5°	CHECKED	
ONE PLACE DECIMAL ±0.1	ENG APPR.	
TWO PLACE DECIMAL ±0.01	MFG APPR.	
THREE PLACE DECIMAL ±0.005	Q.A.	
INTERPRET GEOMETRIC TOLERANCING PER:	COMMENTS:	
MATERIAL		
FINISH		
DO NOT SCALE DRAWING		

Staying Home Corporation
2501 Anaconda Rd
Harrisonville, MO 64701
816-380-2427
www.stayinghome.com



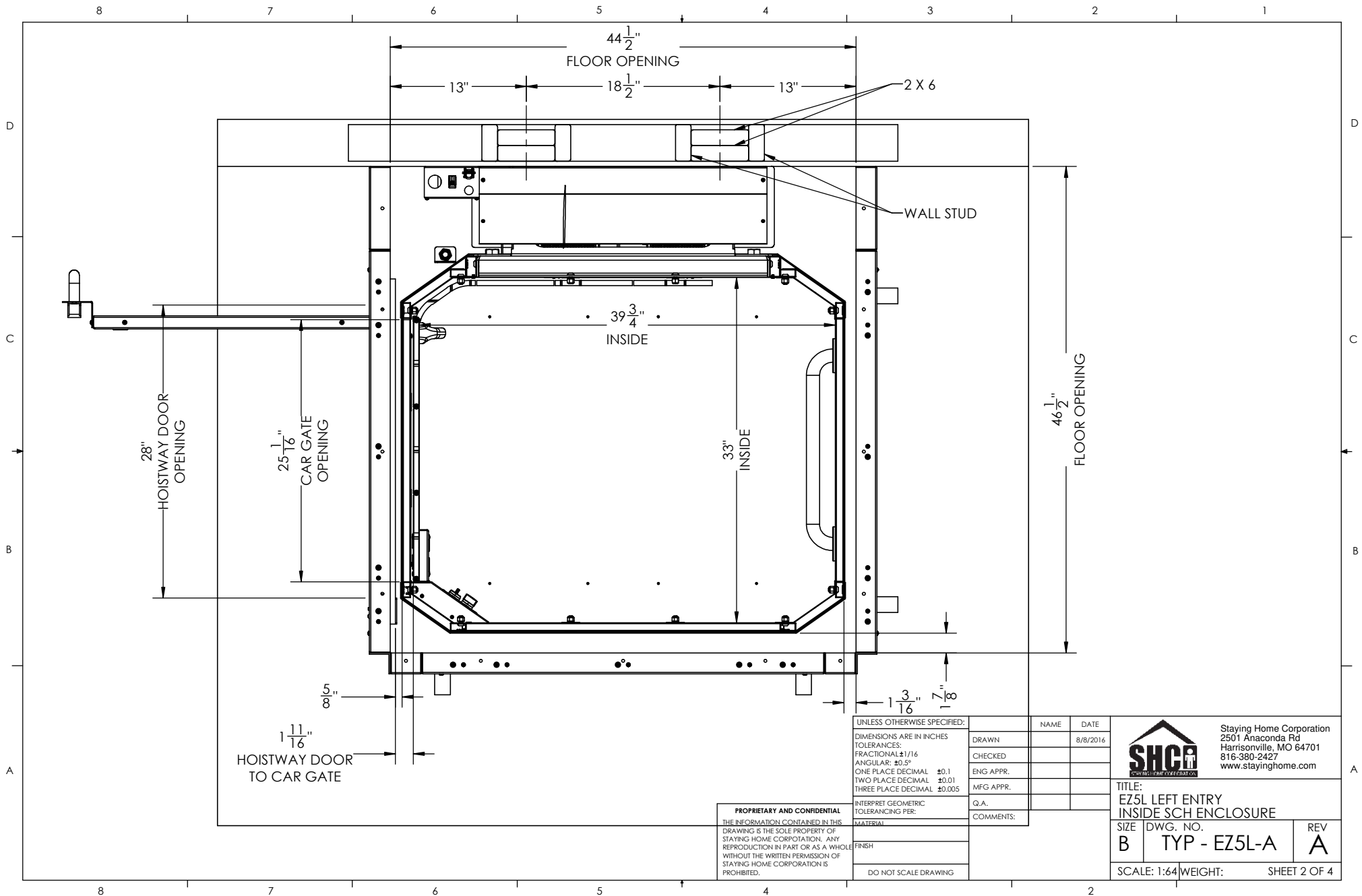
TITLE:
EZ5L LEFT ENTRY
INSIDE SCH ENCLOSURE

SIZE	DWG. NO.	REV
B	TYP - EZ5L-A	A

SCALE: 1:64 WEIGHT: SHEET 1 OF 4

PROPRIETARY AND CONFIDENTIAL
THE INFORMATION CONTAINED IN THIS DRAWING IS THE SOLE PROPERTY OF STAYING HOME CORPORATION. ANY REPRODUCTION IN PART OR AS A WHOLE WITHOUT THE WRITTEN PERMISSION OF STAYING HOME CORPORATION IS PROHIBITED.

SECTION A-A



UNLESS OTHERWISE SPECIFIED:

DIMENSIONS ARE IN INCHES
 TOLERANCES:
 FRACTIONAL ±1/16
 ANGULAR: ±0.5°
 ONE PLACE DECIMAL ±0.1
 TWO PLACE DECIMAL ±0.01
 THREE PLACE DECIMAL ±0.005

INTERPRET GEOMETRIC
 TOLERANCING PER:
 MATERIAL

FINISH

DO NOT SCALE DRAWING

NAME DATE

DRAWN 8/8/2016

CHECKED

ENG APPR.

MFG APPR.

Q.A.

COMMENTS:



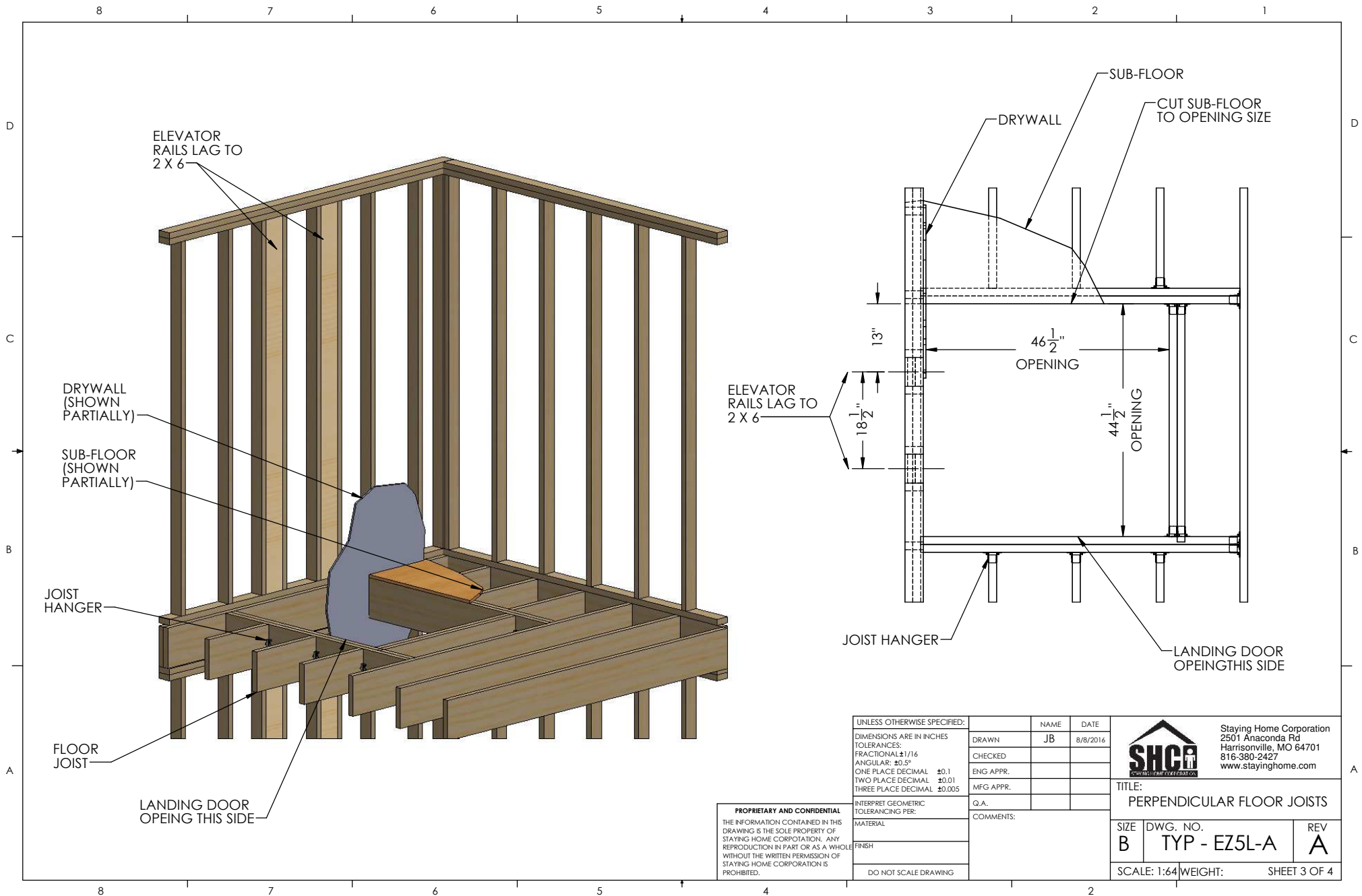
Staying Home Corporation
 2501 Anaconda Rd
 Harrisonville, MO 64701
 816-380-2427
 www.stayinghome.com

TITLE:
 EZ5L LEFT ENTRY
 INSIDE SCH ENCLOSURE

SIZE DWG. NO. REV
 B TYP - EZ5L-A A

SCALE: 1:64 WEIGHT: SHEET 2 OF 4

PROPRIETARY AND CONFIDENTIAL
 THE INFORMATION CONTAINED IN THIS
 DRAWING IS THE SOLE PROPERTY OF
 STAYING HOME CORPORATION. ANY
 REPRODUCTION IN PART OR AS A WHOLE
 WITHOUT THE WRITTEN PERMISSION OF
 STAYING HOME CORPORATION IS
 PROHIBITED.



ELEVATOR
RAILS LAG TO
2 X 6

DRYWALL
(SHOWN
PARTIALLY)

SUB-FLOOR
(SHOWN
PARTIALLY)

JOIST
HANGER

FLOOR
JOIST

LANDING DOOR
OPEING THIS SIDE

SUB-FLOOR

DRYWALL

CUT SUB-FLOOR
TO OPENING SIZE

ELEVATOR
RAILS LAG TO
2 X 6

JOIST HANGER

LANDING DOOR
OPEING THIS SIDE

UNLESS OTHERWISE SPECIFIED:

DIMENSIONS ARE IN INCHES
TOLERANCES:
FRACTIONAL: ±1/16
ANGULAR: ±0.5°
ONE PLACE DECIMAL ±0.1
TWO PLACE DECIMAL ±0.01
THREE PLACE DECIMAL ±0.005

INTERPRET GEOMETRIC
TOLERANCING PER:

MATERIAL

FINISH

DO NOT SCALE DRAWING

NAME	DATE
DRAWN JB	8/8/2016
CHECKED	
ENG APPR.	
MFG APPR.	
Q.A.	

COMMENTS:



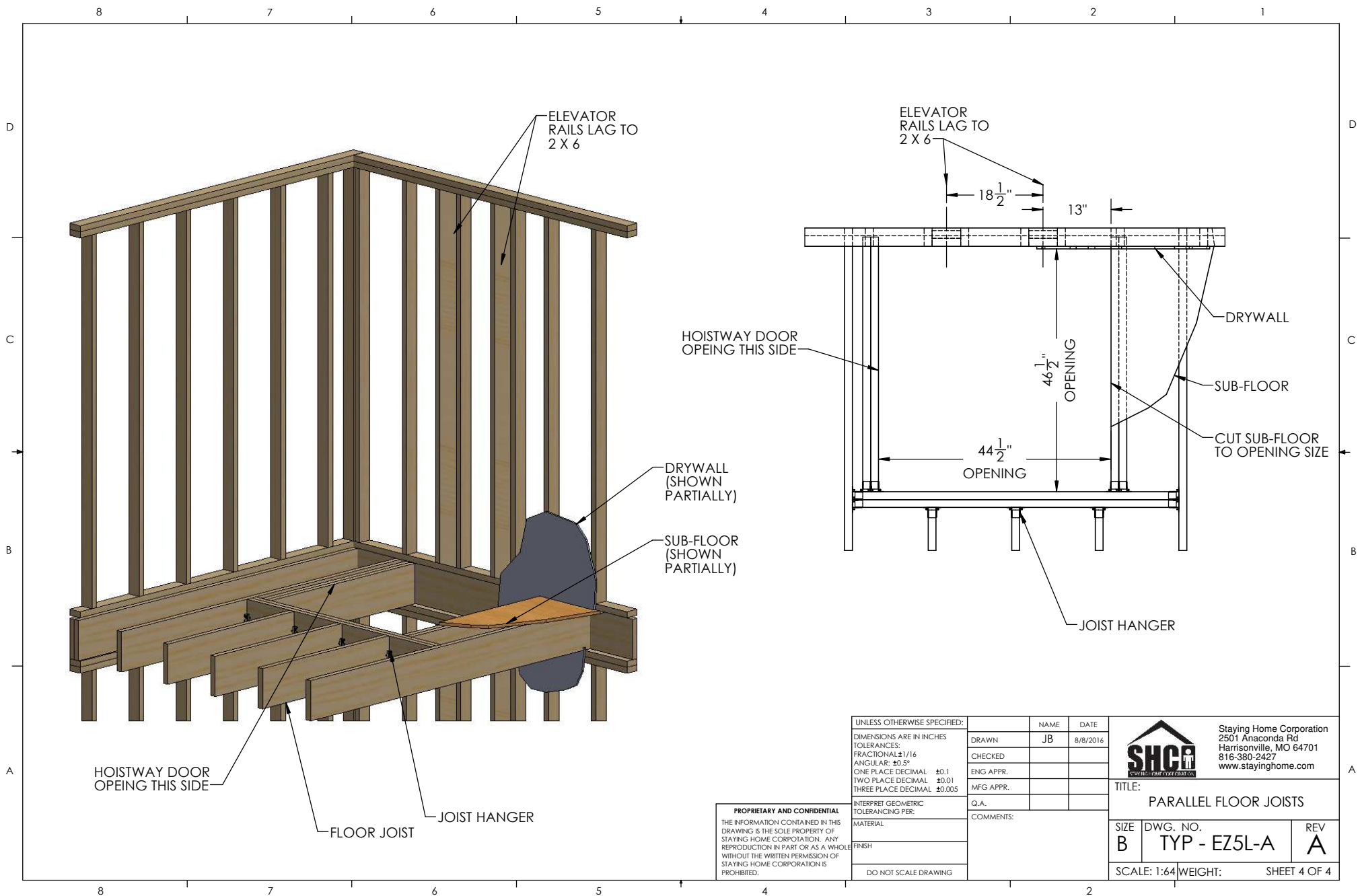
Staying Home Corporation
2501 Anaconda Rd
Harrisonville, MO 64701
816-380-2427
www.stayinghome.com


PROPRIETARY AND CONFIDENTIAL
THE INFORMATION CONTAINED IN THIS
DRAWING IS THE SOLE PROPERTY OF
STAYING HOME CORPORATION. ANY
REPRODUCTION IN PART OR AS A WHOLE
WITHOUT THE WRITTEN PERMISSION OF
STAYING HOME CORPORATION IS
PROHIBITED.

TITLE:
PERPENDICULAR FLOOR JOISTS

SIZE	DWG. NO.	REV
B	TYP - EZ5L-A	A

SCALE: 1:64 WEIGHT: SHEET 3 OF 4



UNLESS OTHERWISE SPECIFIED:		NAME	DATE	 Staying Home Corporation 2501 Anaconda Rd Harrisonville, MO 64701 816-380-2427 www.stayinghome.com	
DIMENSIONS ARE IN INCHES		DRAWN	JB		8/8/2016
TOLERANCES:		CHECKED			
FRACTIONAL: ±1/16		ENG APPR.			
ANGULAR: ±0.5°		MFG APPR.			
ONE PLACE DECIMAL ±0.1		Q.A.			
TWO PLACE DECIMAL ±0.01		COMMENTS:			
THREE PLACE DECIMAL ±0.005					
INTERPRET GEOMETRIC TOLERANCING PER:					
MATERIAL					
FINISH					
DO NOT SCALE DRAWING					

PROPRIETARY AND CONFIDENTIAL
 THE INFORMATION CONTAINED IN THIS DRAWING IS THE SOLE PROPERTY OF STAYING HOME CORPORATION. ANY REPRODUCTION IN PART OR AS A WHOLE WITHOUT THE WRITTEN PERMISSION OF STAYING HOME CORPORATION IS PROHIBITED.

TITLE: PARALLEL FLOOR JOISTS		
SIZE B	DWG. NO. TYP - EZ5L-A	REV A
SCALE: 1:64	WEIGHT:	SHEET 4 OF 4