
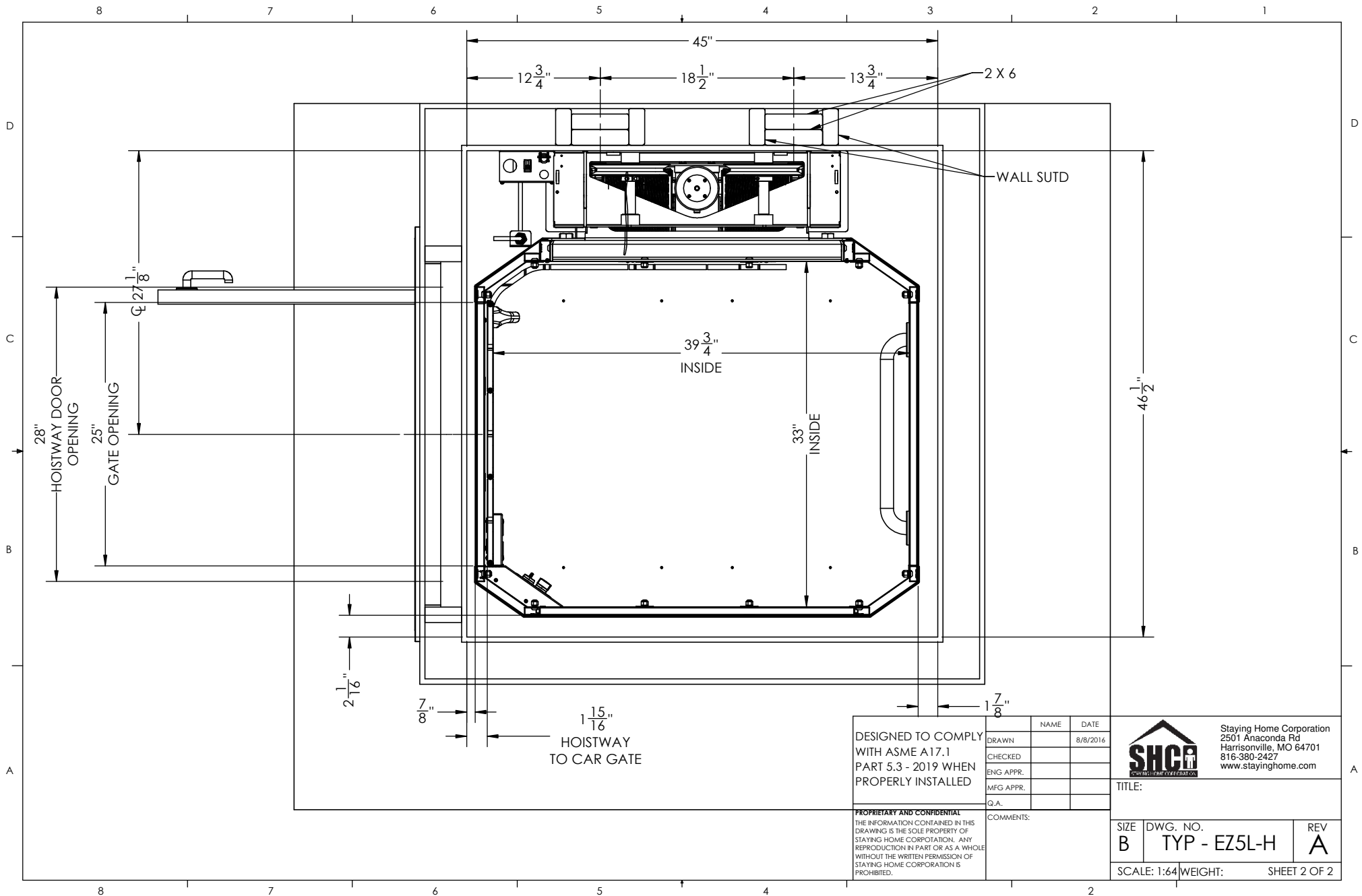


- Features:**
- Battery Powered: 24 VDC Control System
  - Rated Load: 400 lbs
  - Speed: 15-18 fpm
  - Max. Travel: 21'-0"
  - Car Size: 33W x 39D x 75H
  - Overhead Clearance: 7'-2" Min.
  - Powder Coated Metal: Gray White
  - Vision Panels: Clear Acrylic
  - Car Light: Recessed LED
  - Telephone: Inside Telephone Cabinet
  - Automatic Operation up/down controls
  - Key Lock on controls
  - Emergency Stop Switch and Alarm
  - Status LED
  - Winding Drum Drive with two 1/4" aircraft cables
  - Electromechanical Interlock on Hoistway Doors
  - Grab Rail
  - Slack Cable Safety Device
  - Final Limit Switches

DESIGNED TO COMPLY WITH ASME A17.1 PART 5.3 - 2019 WHEN PROPERLY INSTALLED	DRAWN	NAME	DATE	 Staying Home Corporation 2501 Anaconda Rd Harrisonville, MO 64701 816-380-2427 www.stayinghome.com
	CHECKED		8/8/2016	
	ENG APPR.			
	MFG APPR.			
PROPRIETARY AND CONFIDENTIAL	Q.A.			TITLE: EZ5L INSIDE HOISTWAY BY OTHERS
THE INFORMATION CONTAINED IN THIS DRAWING IS THE SOLE PROPERTY OF STAYING HOME CORPORATION. ANY REPRODUCTION IN PART OR AS A WHOLE WITHOUT THE WRITTEN PERMISSION OF STAYING HOME CORPORATION IS PROHIBITED.	COMMENTS:			SIZE DWG. NO. REV <b>B</b> TYP - EZ5L-H <b>A</b>
				SCALE: 1:64 WEIGHT: SHEET 1 OF 2



DESIGNED TO COMPLY WITH ASME A17.1 PART 5.3 - 2019 WHEN PROPERLY INSTALLED

	NAME	DATE
DRAWN		8/8/2016
CHECKED		
ENG APPR.		
MFG APPR.		
Q.A.		

**PROPRIETARY AND CONFIDENTIAL**  
 THE INFORMATION CONTAINED IN THIS DRAWING IS THE SOLE PROPERTY OF STAYING HOME CORPORATION. ANY REPRODUCTION IN PART OR AS A WHOLE WITHOUT THE WRITTEN PERMISSION OF STAYING HOME CORPORATION IS PROHIBITED.

COMMENTS:

 <small>STAYING HOME CORPORATION</small>	Staying Home Corporation 2501 Anaconda Rd Harrisonville, MO 64701 816-380-2427 www.stayinghome.com	
	TITLE:	
SIZE <b>B</b>	DWG. NO. <b>TYP - EZ5L-H</b>	REV <b>A</b>
SCALE: 1:64		WEIGHT: SHEET 2 OF 2