

FRONT VIEW

SIDE VIEW

PLAN VIEW

DESIGNED TO COMPLY WITH ASME A17.1 PART 5.3 WHEN PROPERLY INSTALLED

CONTROLLER CONFORMS TO ASME A17.5 INTERTEK 4010781



- Features:**
- Battery Powered: 24 VDC Control System
  - Rated Load: 400 lbs
  - Speed: 8-10 fpm
  - Max. Travel: 14'-0"
  - Car Size: 33W x 39D x 75H
  - Overhead Clearance: 7'-6" Min.
  - Powder Coated Metal: Gray White
  - Vision Panels: Clear Acrylic
  - Car Light: Recessed LED
  - Telephone: Inside Telephone Cabinet
  - Constant pressure up/down controls
  - Key Lock on controls
  - Emergency Stop Switch and Alarm
  - Status LED
  - Winding Drum Drive with two 1/4" aircraft cables
  - Electromechanical Interlock on Gate
  - Grab Rail
  - Slack Cable Safety Device
  - Final Limit Switches
  - Safety Obstruction Sensors above and below Car

**PROPRIETARY AND CONFIDENTIAL**  
 THE INFORMATION CONTAINED IN THIS DRAWING IS THE SOLE PROPERTY OF STAYING HOME CORPORATION. ANY REPRODUCTION IN PART OR AS A WHOLE WITHOUT THE WRITTEN PERMISSION OF STAYING HOME CORPORATION IS PROHIBITED.

UNLESS OTHERWISE SPECIFIED:		NAME	DATE
DIMENSIONS ARE IN INCHES			8/8/2016
TOLERANCES:			
FRACTIONAL: ±1/16		DRAWN	
ANGULAR: ±0.5°		CHECKED	
ONE PLACE DECIMAL ±0.1		ENG APPR.	
TWO PLACE DECIMAL ±0.01		MFG APPR.	
THREE PLACE DECIMAL ±0.005		Q.A.	
INTERPRET GEOMETRIC TOLERANCING PER:		COMMENTS:	
MATERIAL			
FINISH			
DO NOT SCALE DRAWING			

		Staying Home Corporation 2501 Anaconda Rd Harrisonville, MO 64701 816-380-2427 www.stayinghome.com	
		TITLE: <b>EZ5 LEFT ENTRY SHAFTLESS</b>	
SIZE <b>B</b>	DWG. NO. <b>TYP - EZ5L</b>	REV <b>A</b>	
SCALE: 1:64		WEIGHT: SHEET 1 OF 4	

8 7 6 5 4 3 2 1

D

C

B

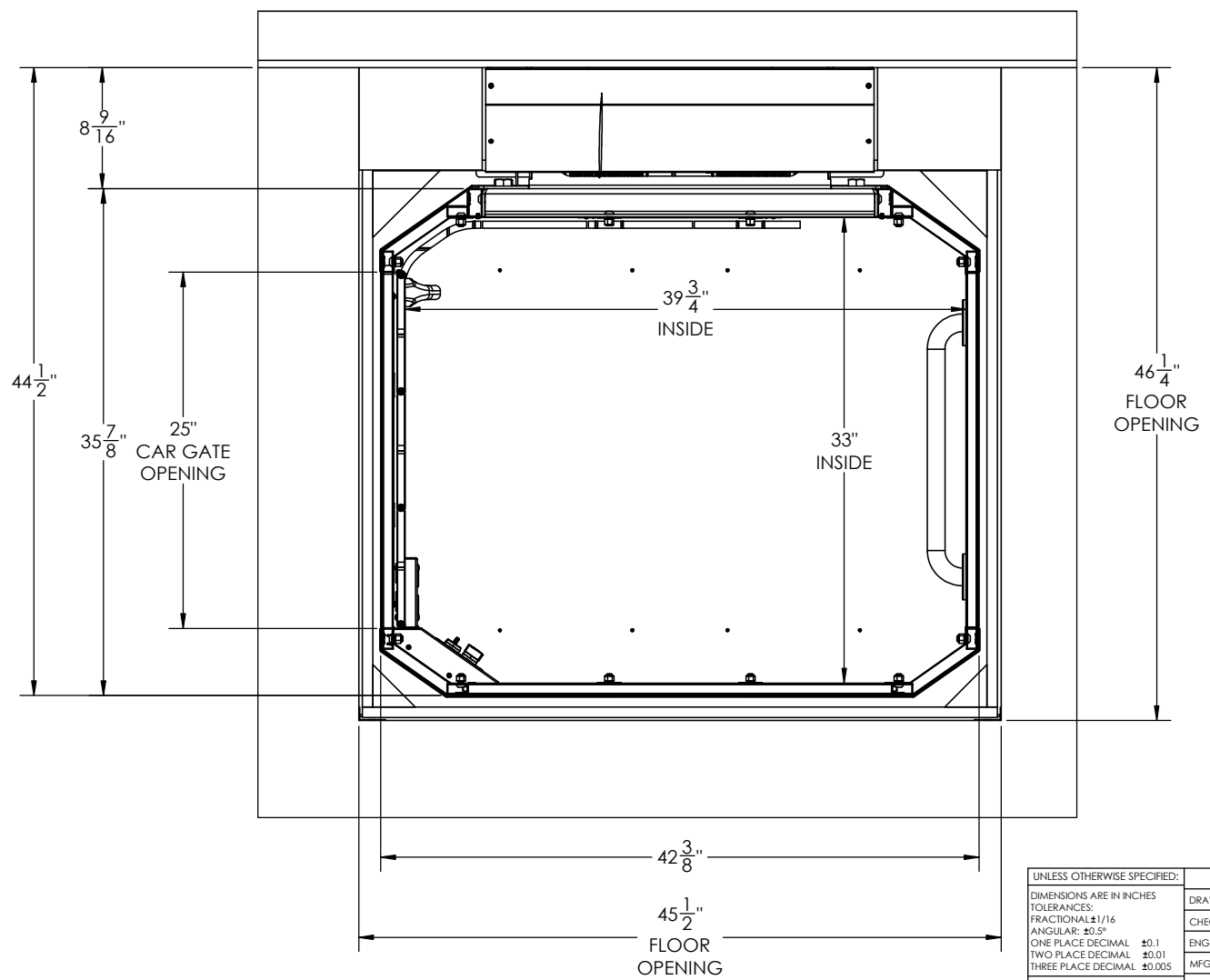
A

D

C

B

A

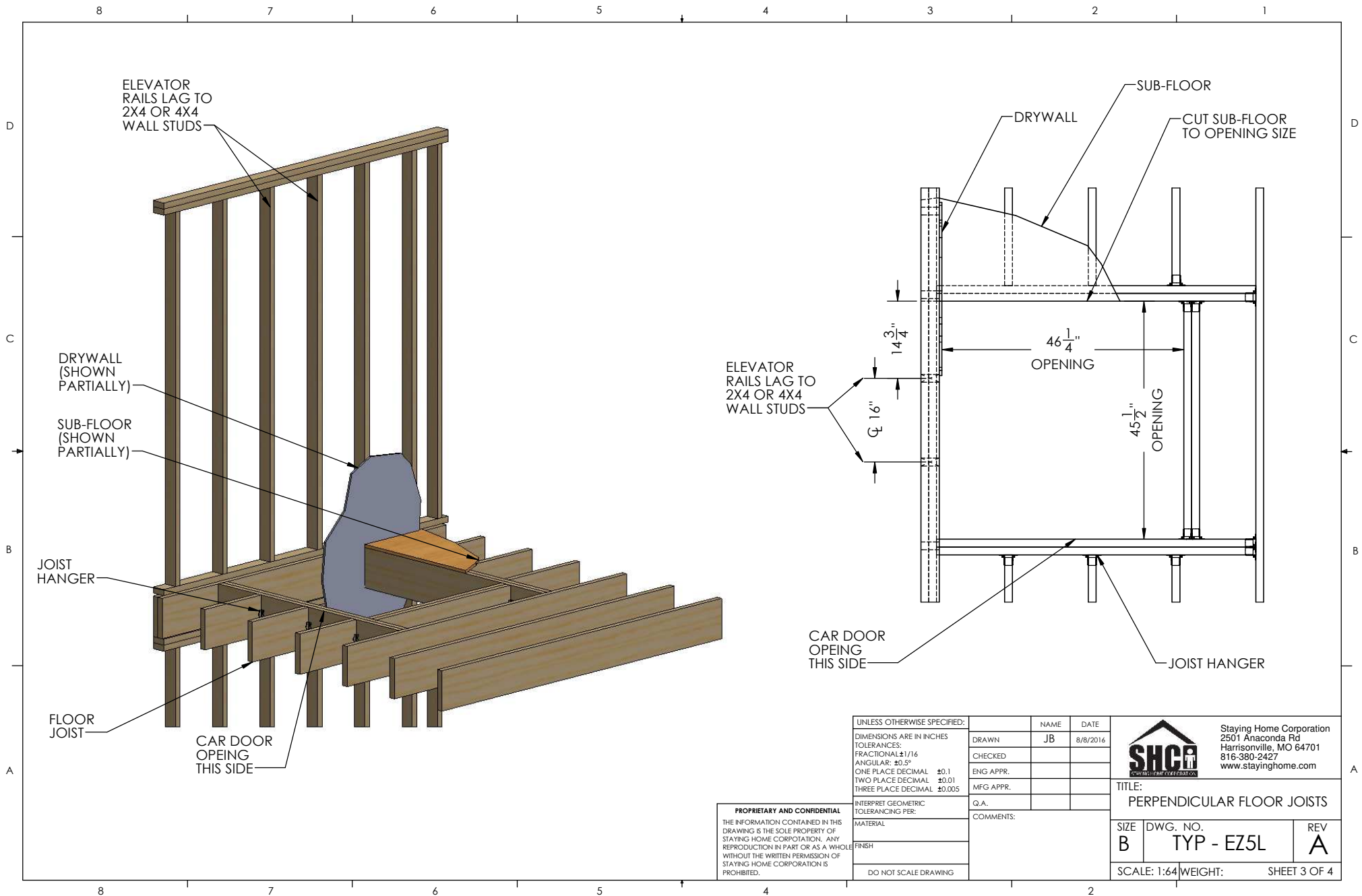


**PROPRIETARY AND CONFIDENTIAL**  
 THE INFORMATION CONTAINED IN THIS DRAWING IS THE SOLE PROPERTY OF STAYING HOME CORPORATION. ANY REPRODUCTION IN PART OR AS A WHOLE WITHOUT THE WRITTEN PERMISSION OF STAYING HOME CORPORATION IS PROHIBITED.

UNLESS OTHERWISE SPECIFIED:		NAME	DATE
DIMENSIONS ARE IN INCHES		DRAWN	8/8/2016
TOLERANCES:		CHECKED	
FRACTIONAL ±1/16		ENG APPR.	
ANGULAR: ±0.5°		MFG APPR.	
ONE PLACE DECIMAL ±0.1		Q.A.	
TWO PLACE DECIMAL ±0.01		COMMENTS:	
THREE PLACE DECIMAL ±0.005			
INTERPRET GEOMETRIC TOLERANCING PER:			
MATERIAL			
FINISH			
DO NOT SCALE DRAWING			

 Staying Home Corporation 2501 Anaconda Rd Harrisonville, MO 64701 816-380-2427 www.stayinghome.com		TITLE:	
		EZ5 LEFT ENTRY SHAFTLESS	
SIZE	DWG. NO.	REV	
B	TYP - EZ5L	A	
SCALE: 1:64		WEIGHT:	SHEET 2 OF 4

8 7 6 5 4 3 2 1

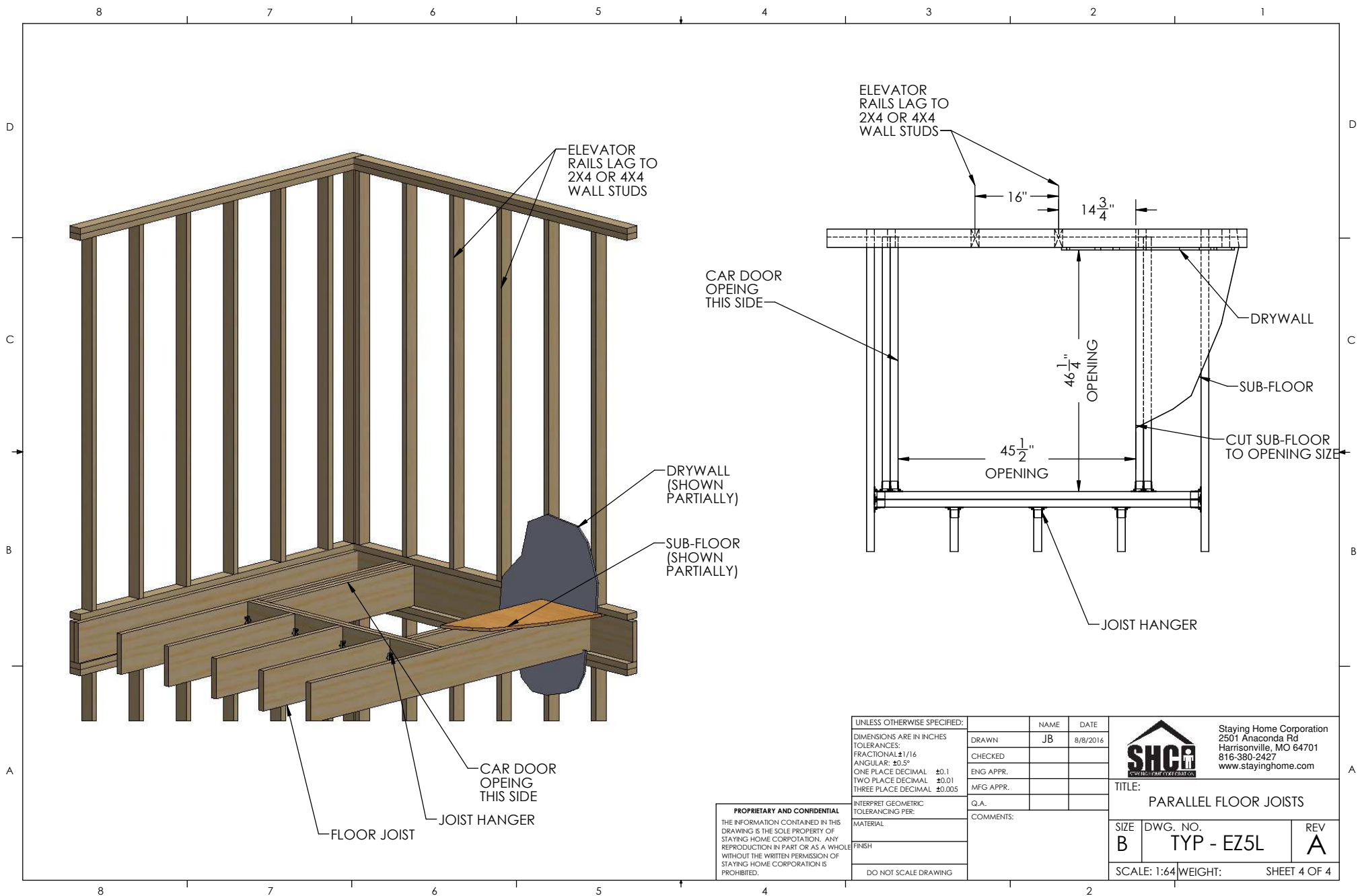


**PROPRIETARY AND CONFIDENTIAL**  
 THE INFORMATION CONTAINED IN THIS DRAWING IS THE SOLE PROPERTY OF STAYING HOME CORPORATION. ANY REPRODUCTION IN PART OR AS A WHOLE WITHOUT THE WRITTEN PERMISSION OF STAYING HOME CORPORATION IS PROHIBITED.

UNLESS OTHERWISE SPECIFIED:	
DIMENSIONS ARE IN INCHES	
TOLERANCES:	
FRACTIONAL	±1/16
ANGULAR	±0.5°
ONE PLACE DECIMAL	±0.1
TWO PLACE DECIMAL	±0.01
THREE PLACE DECIMAL	±0.005
INTERPRET GEOMETRIC TOLERANCING PER:	
MATERIAL	
FINISH	
DO NOT SCALE DRAWING	

NAME	DATE
DRAWN JB	8/8/2016
CHECKED	
ENG APPR.	
MFG APPR.	
Q.A.	
COMMENTS:	

 Staying Home Corporation 2501 Anaconda Rd Harrisonville, MO 64701 816-380-2427 www.stayinghome.com		TITLE: PERPENDICULAR FLOOR JOISTS	
		SIZE B	DWG. NO. TYP - EZ5L
SCALE: 1:64		WEIGHT:	SHEET 3 OF 4



UNLESS OTHERWISE SPECIFIED:

DIMENSIONS ARE IN INCHES  
 TOLERANCES:  
 FRACTIONAL: ±1/16  
 ANGULAR: ±0.5°  
 ONE PLACE DECIMAL ±0.1  
 TWO PLACE DECIMAL ±0.01  
 THREE PLACE DECIMAL ±0.005

INTERPRET GEOMETRIC TOLERANCING PER:

MATERIAL

FINISH

DO NOT SCALE DRAWING

NAME	DATE
DRAWN JB	8/8/2016
CHECKED	
ENG APPR.	
MFG APPR.	
Q.A.	

COMMENTS:

**PROPRIETARY AND CONFIDENTIAL**  
 THE INFORMATION CONTAINED IN THIS DRAWING IS THE SOLE PROPERTY OF STAYING HOME CORPORATION. ANY REPRODUCTION IN PART OR AS A WHOLE WITHOUT THE WRITTEN PERMISSION OF STAYING HOME CORPORATION IS PROHIBITED.



Staying Home Corporation  
 2501 Anaconda Rd  
 Harrisonville, MO 64701  
 816-380-2427  
 www.stayinghome.com

TITLE: PARALLEL FLOOR JOISTS

SIZE B	DWG. NO. TYP - EZ5L	REV A
--------	---------------------	-------

SCALE: 1:64 WEIGHT: SHEET 4 OF 4